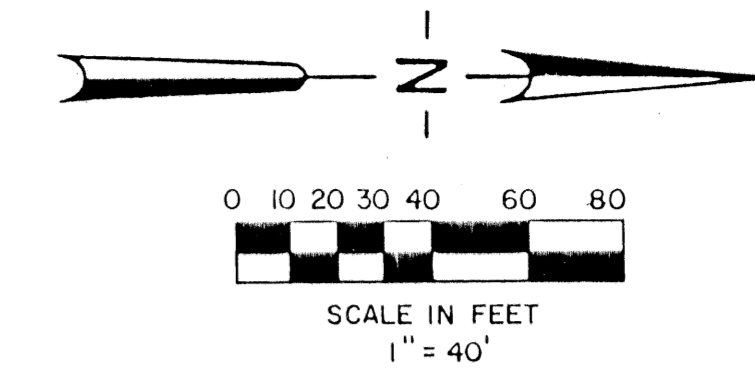
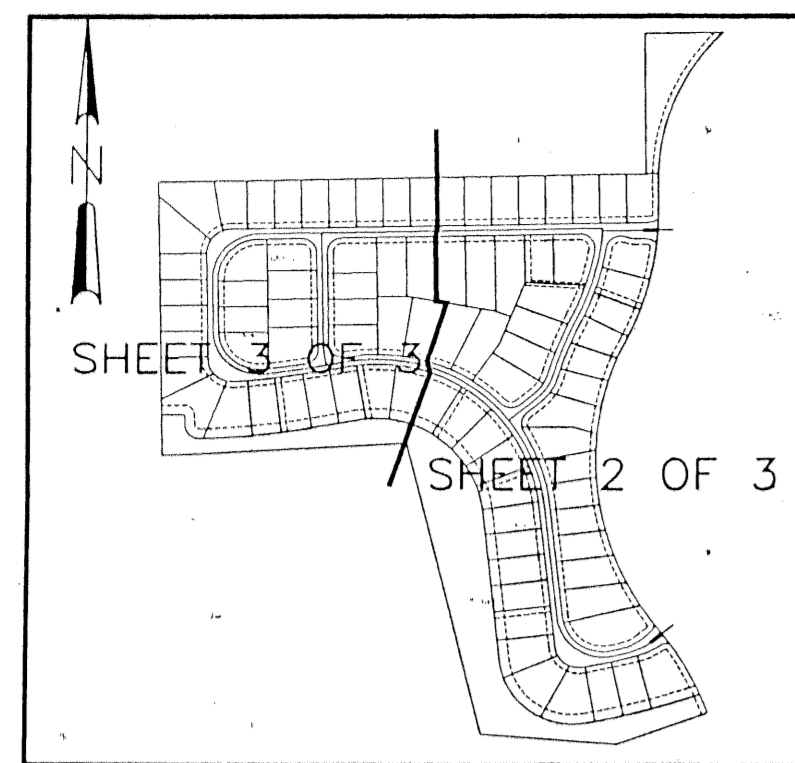


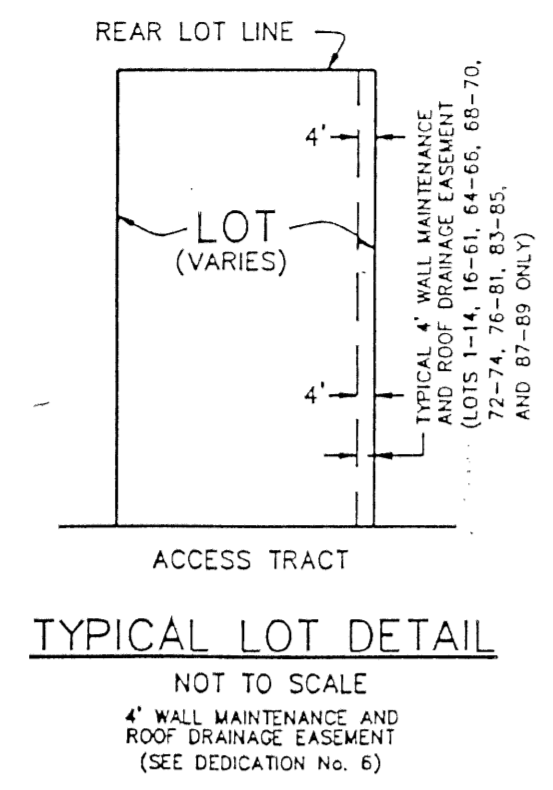
OLIVE TREE - PARCEL 6C
BEING A REPLAT OF A PORTION OF OLIVE TREE - PHASE 5A/6B
OF THE RIVER BRIDGE P.U.D., (P.B. 76, PGS. 102 - 104)
LYING IN SECTION 10, TOWNSHIP 44 SOUTH, RANGE 42 EAST
CITY OF GREENACRES, PALM BEACH COUNTY, FLORIDA.
JANUARY 1996



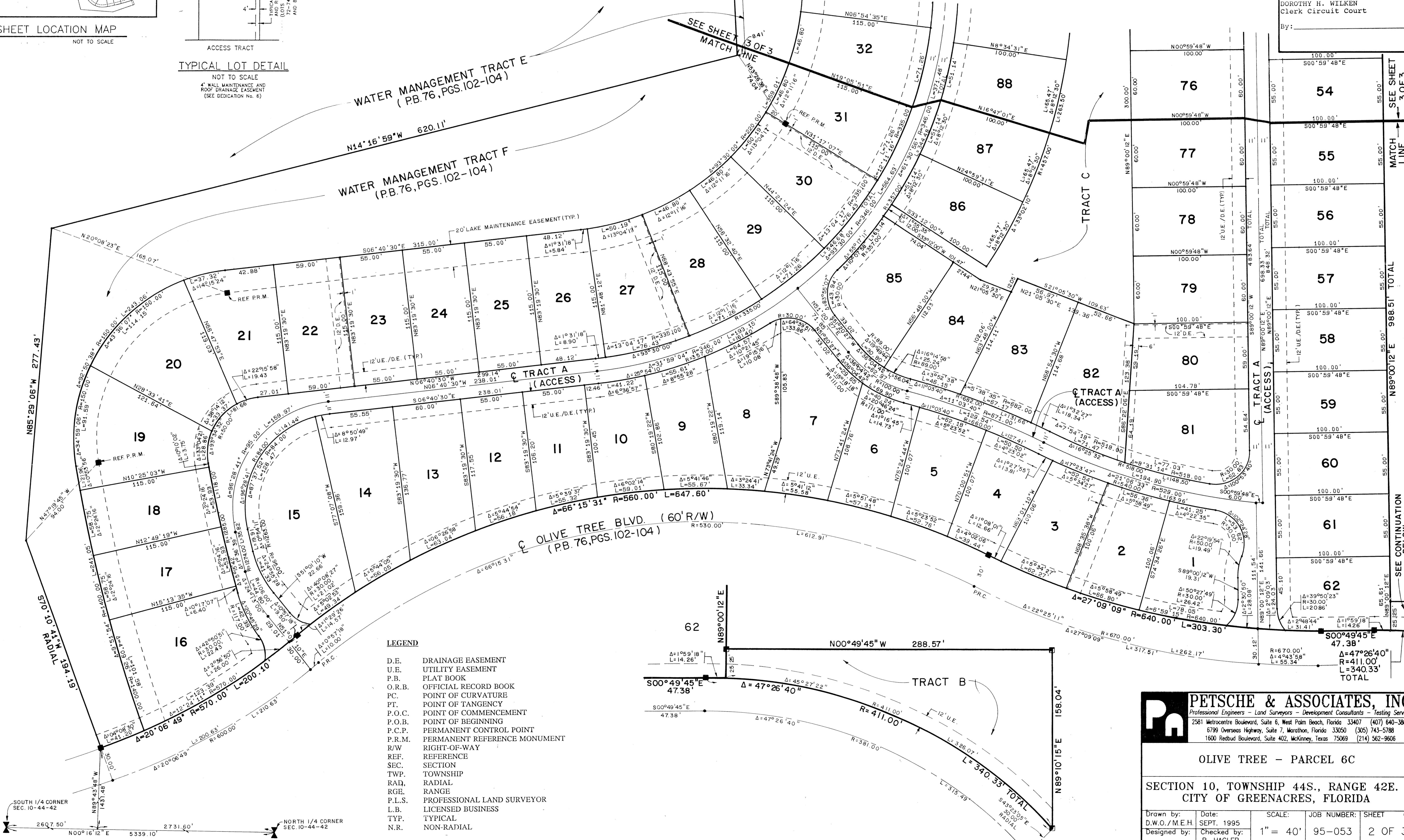
STATE OF FLORIDA
COUNTY OF PALM BEACH
This plat was filed for record on _____, this day of _____, 1996, and duly recorded in Plat Book No. _____ on Pages _____ thru _____.
DOROTHY H. WILKEN
Clerk Circuit Court
By: _____



SHEET LOCATION MAP
NOT TO SCALE



TYPICAL LOT DETAIL
NOT TO SCALE



- LEGEND**
- D.E. DRAINAGE EASEMENT
 - U.E. UTILITY EASEMENT
 - P.B. PLAT BOOK
 - O.R.B. OFFICIAL RECORD BOOK
 - P.C. POINT OF CURVATURE
 - P.T. POINT OF TANGENCY
 - P.O.C. POINT OF COMMENCEMENT
 - P.O.B. POINT OF BEGINNING
 - P.C.P. PERMANENT CONTROL POINT
 - P.R.M. PERMANENT REFERENCE MONUMENT
 - R/W RIGHT-OF-WAY
 - REF. REFERENCE
 - SEC. SECTION
 - TWP. TOWNSHIP
 - RAD. RADIAL
 - RGE. RANGE
 - P.L.S. PROFESSIONAL LAND SURVEYOR
 - L.B. LICENSED BUSINESS
 - TYP. TYPICAL
 - N.R. NON-RADIAL

SUBDIVISION * OLIVE TREE
BOOK 76 PAGE 132
FLOOD ZONE - FLOOD MAP *
QUAD * - ZONING
SE - ZIP CODE
PUD NAME

PETSCHÉ & ASSOCIATES, INC.
Professional Engineers - Land Surveyors - Development Consultants - Testing Services
2581 Metrocentre Boulevard, Suite 6, West Palm Beach, Florida 33407 (407) 640-3800
6799 Overseas Highway, Suite 7, Marathon, Florida 33050 (305) 743-5788
1600 Redbud Boulevard, Suite 402, McKinney, Texas 75069 (214) 562-9606

OLIVE TREE - PARCEL 6C

SECTION 10, TOWNSHIP 44S., RANGE 42E.
CITY OF GREENACRES, FLORIDA

Drawn by:	Date:	SCALE:	JOB NUMBER:	SHEET	OF
D.W.O./M.E.H.	SEPT. 1995	1" = 40'	95-053	2 OF 3	
Designed by:	Checked by:				
R. HAGLER					